

# 5858

## HORTON STREET

EMERYVILLE, CA

EMERY STATION  
RESEARCH CAMPUS



NEWMARK

WAREHAM  
DEVELOPMENT

**JONATHAN TOMASCO**

† 510-923-6262

Jonathan.tomasco@nrmk.com

CA RE Lic #01224562



5858 Horton Street



# EMERYSTATION RESEARCH CAMPUS FEATURES

Easy access from all major public transportation and freeways with plentiful campus parking and car-charging stations.

Free Emery Go-Round shuttle to and from BART.

Amtrak Intermodal Transit Center for easy commutes between Sacramento and San Jose on Capitol Corridor Route.

Bike parking, bike share, and bike repair stations.

Popular restaurants: Bureau 510, Summer Summer, Ruby's Café, Polaris Café, Branch Line Bar, Subway.

Campus Fitness Center.

Electric Car Chargers on Site

Conference rooms equipped for larger meetings.

Lush organic gardens and pocket parks. Sculptures and art throughout the campus.

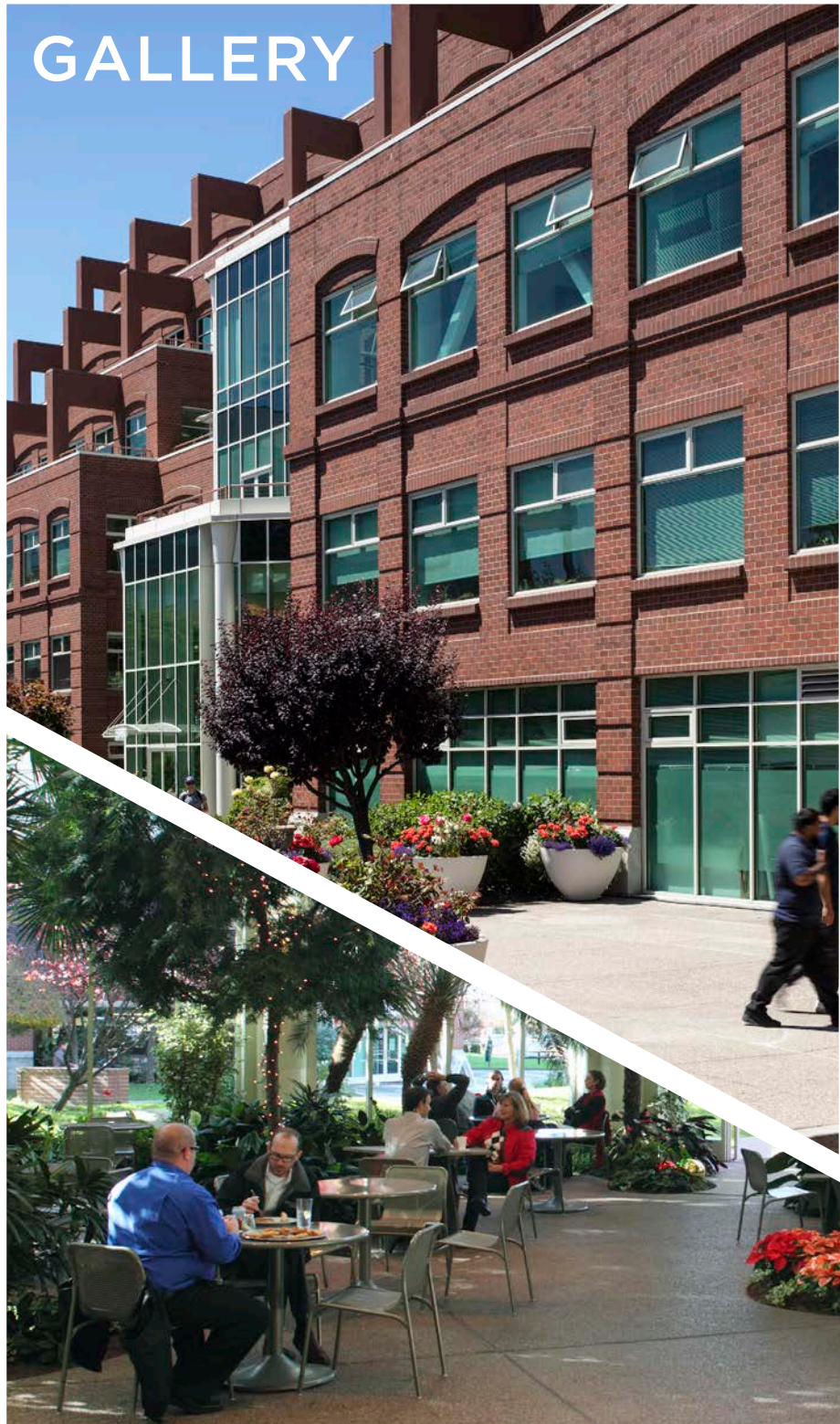
Walkable to or a quick free shuttle hop to the restaurants, shopping, hospitality, and entertainment at Public Market, Powell Street Plaza and Bay Street

Close proximity to UC Berkeley, UC San Francisco, and hundreds of tech and research companies.

Stellar property management team 24/7



# GALLERY





# GALLERY





# FLOOR PLAN

## 5858 HORTON SUITE 170 FEATURES

10,112 RSF

Ground level location with big window lines for good visibility.

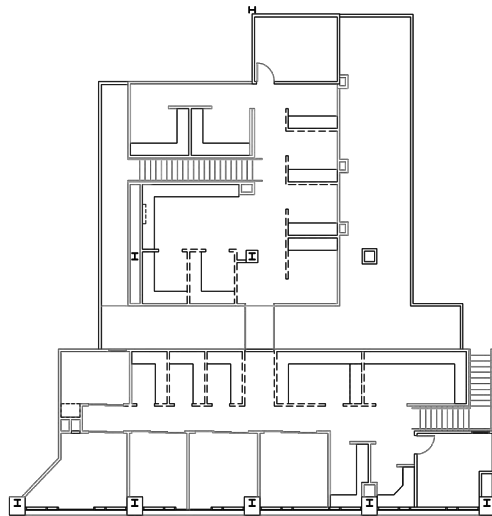
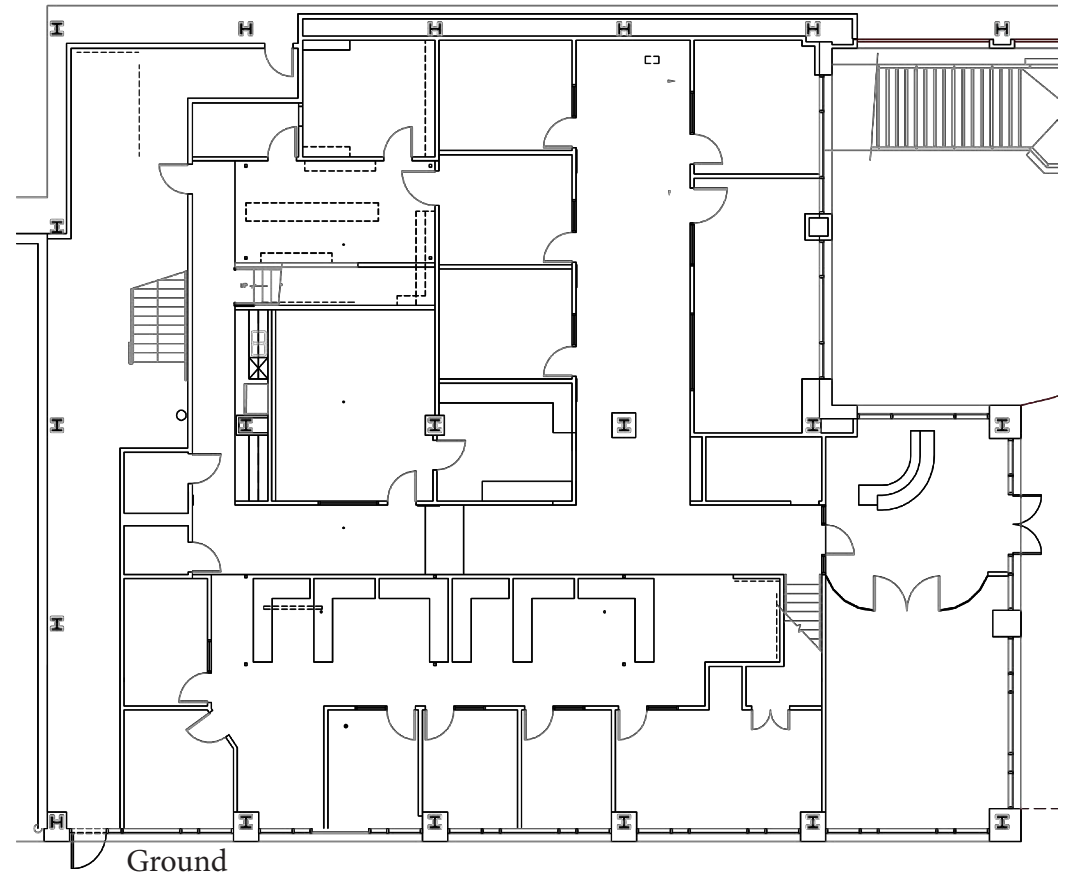
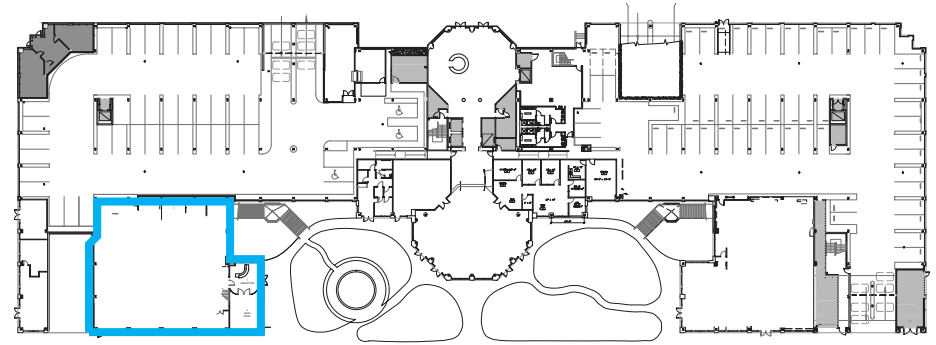
Open ceiling plan.

Reception area, main conference room, and break room.

Dedicated street entrance off courtyard with lush landscaping and art.

Great exterior signage identity, if desired.

Full campus amenities including fitness center and large campus conference rooms.



Mezzanine

# FLOOR PLAN

## 5858 HORTON SUITE 193 FEATURES

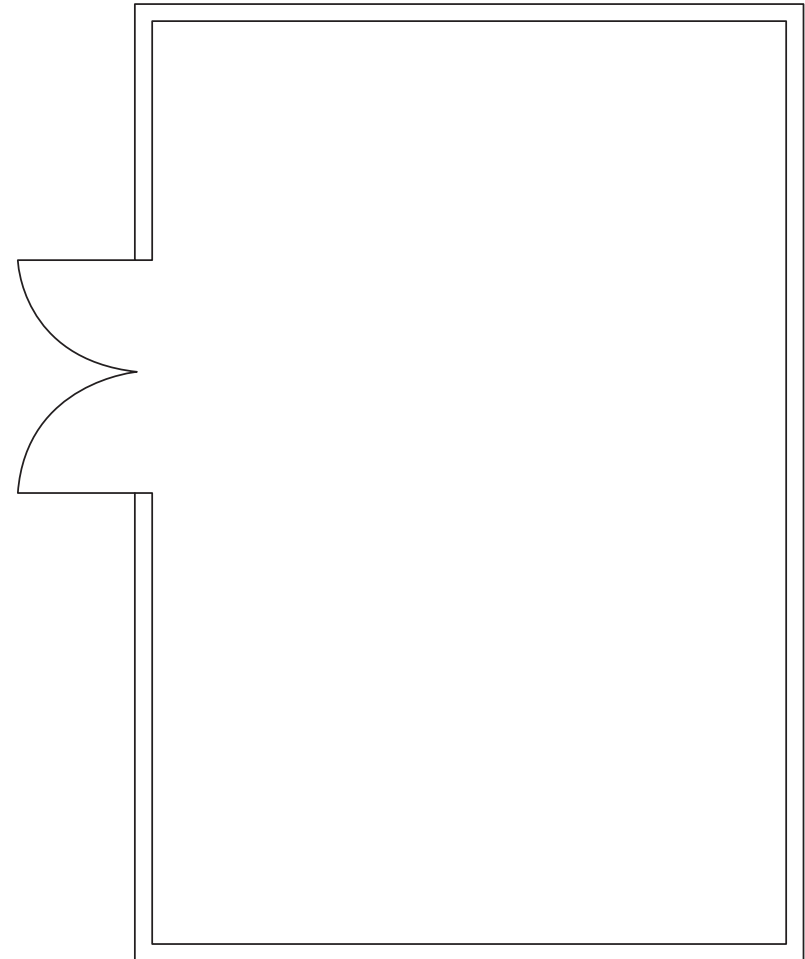
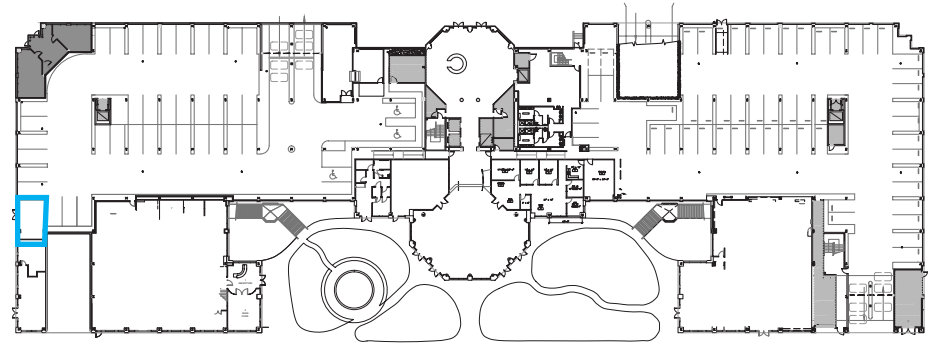
920 RSF

Ground level location with big window line for good visibility

Dedicated street entrance

Great exterior signage identity, if desired

Full campus amenities including fitness center and large campus conference rooms.



# FLOOR PLAN

## 5858 HORTON SUITE 300 FEATURES

13,058 RSF

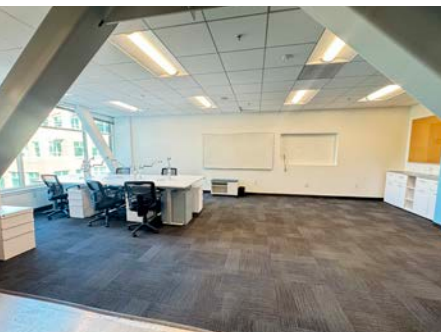
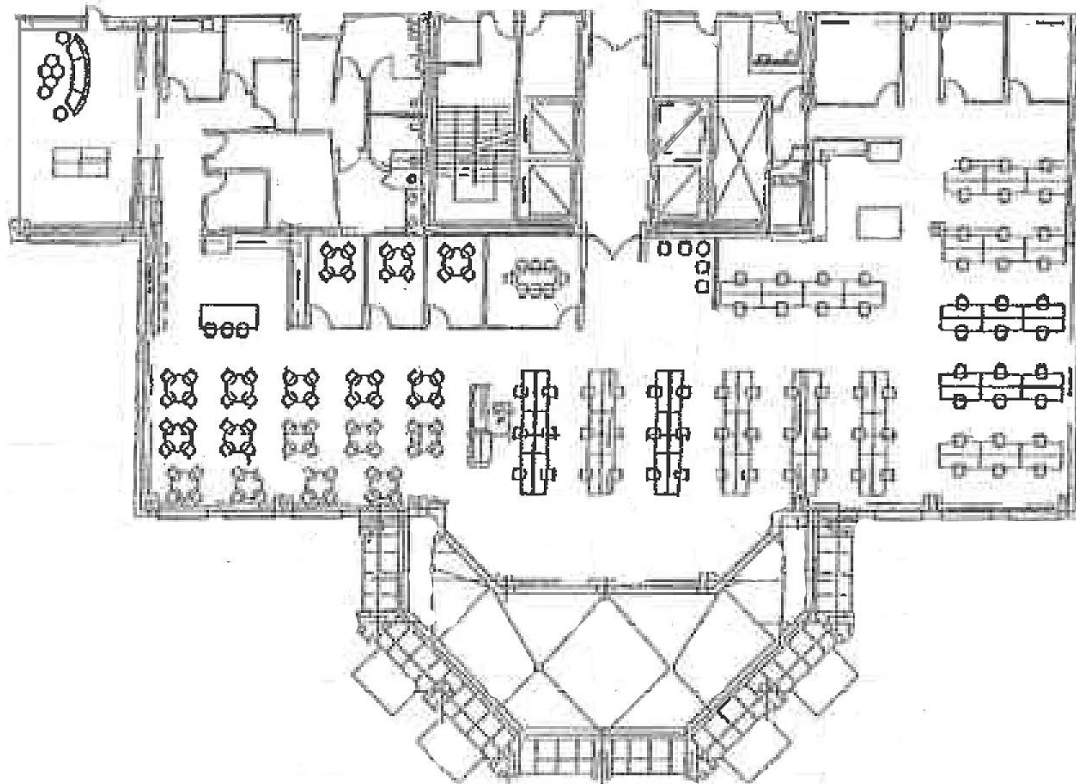
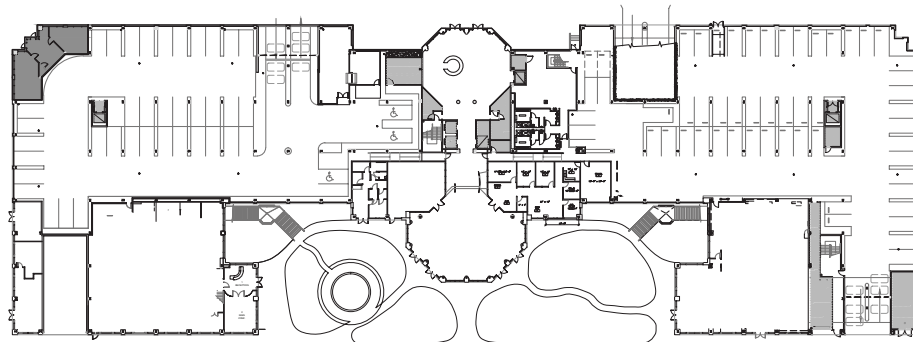
Third floor location with elevator identity.

Reception area with multiple conference/breakout room.

Plug in Play with open floorplan, and interior private offices.

Abundance of natural light with exclusive access to exterior deck.

Full campus amenities including fitness center and large campus conference rooms.





# 5858

## HORTON STREET

EMERYVILLE, CA

EMERY STATION  
RESEARCH CAMPUS

**TOMASCO, JONATHAN**

† 510-923-6262

Jonathan.tomasco@nmrk.com

CA RE Lic #01224562

1111 Broadway Suite 100, Oakland, CA 94607

The distributor of this communication is performing acts for which a real estate license is required. The information contained herein has been obtained from sources deemed reliable but has not been verified and no guarantee, warranty or representation, either express or implied, is made with respect to such information. Terms of sale or lease and availability are subject to change or withdrawal without notice. MP24-698 4/18/24

**NEWMARK**

**WAREHAM**  
DEVELOPMENT